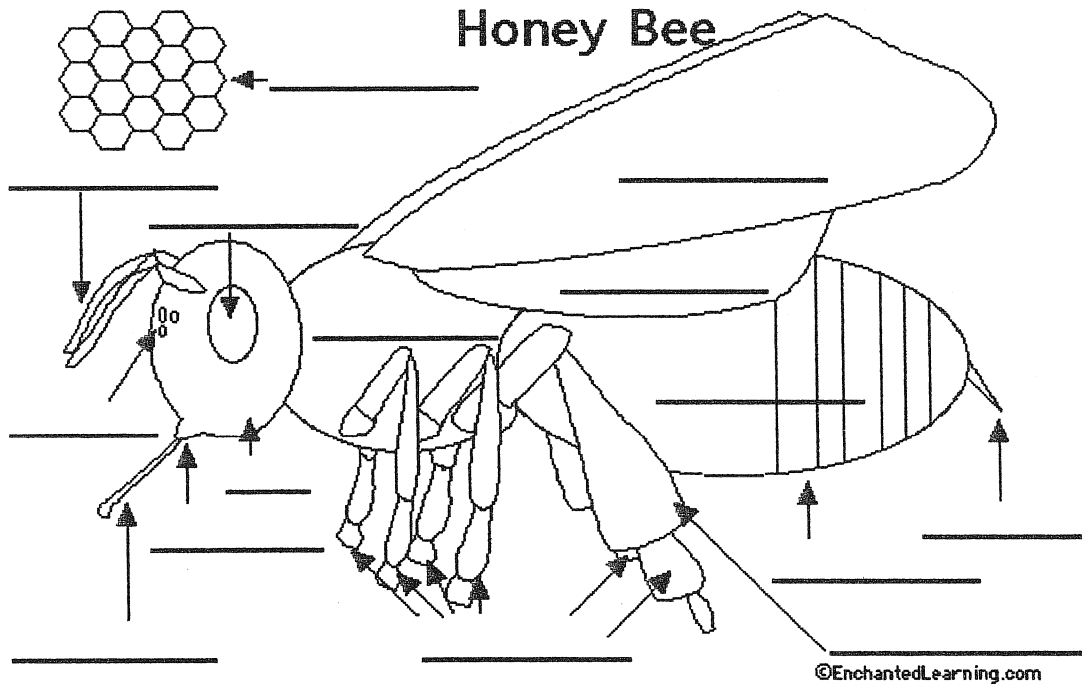


Label the Bee

Read the definitions, then label the diagram below.



©EnchantedLearning.com

Abdomen - the segmented tail area (it has nine segments) of a bee, that contains the heart, reproductive organs, wax glands, and most of the digestive system

Antenna - one of two sensory appendages attached to the head of adult bees

Compound Eye - one of two large eyes that are made up of many hexagonal lenses

Forewing - one of the two large, upper wings (attached to the thorax)

Head - The head is the part of the insect that contains the brain, the eyes, the proboscis, and the mandibles - the two antennae are attached to the head

Hind wing - one of the two lower wings (attached to the thorax).

Honeycomb - the hexagonal structure made of wax that is constructed by bees and used to incubate eggs and store honey

Leg - adult bees have six legs attached to the thorax

Mandibles - a pair of plier-like jaws - located on the lower sides of the head. They are used to carry things, construct and clean the hive, hold enemies, and bite into flowers (to release pollen)

Pollen baskets - areas located on the hind legs - used for carrying pollen back to the hive

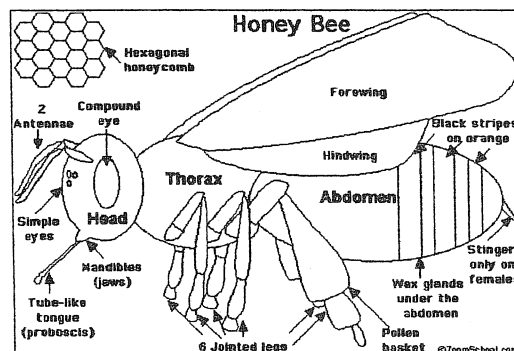
Proboscis - a straw-like tongue attached on the head - it is used for eating tiny particles like pollen

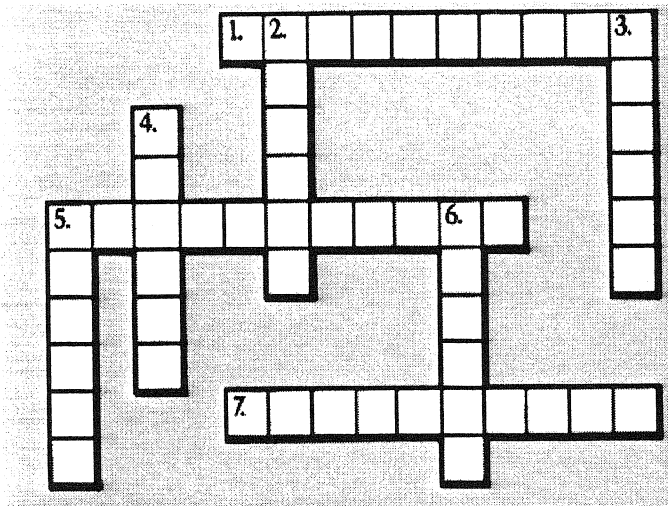
Simple eyes - small eyes located towards the front of the face - they can only tell light from dark

Stinger - a sharp shaft located at the end of the abdomen and used for defense - only present on females

Thorax - the body section between the head and the abdomen - the legs and wings attach to the thorax

Wax glands - glands under the abdomen that make wax - used in forming the honeycomb





Across

- 1. A type of melon pollinated by honeybees.
- 5. The transfer of pollen from the male part of the plant to the female.
- 7. People who handle beehives.

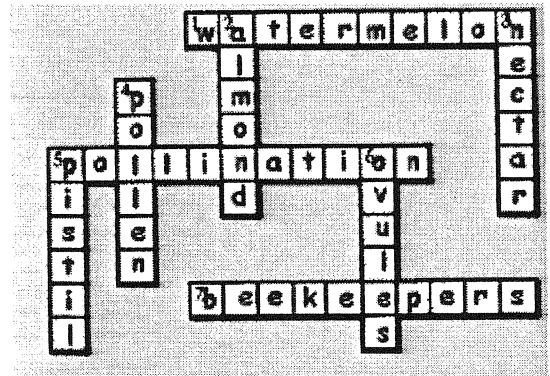
Down

- 2. A type of nut pollinated by honey bees.
- 3. What do bees collect from flowers?
- 4. The powdery substance picked up by bees in their "baskets."
- 5. The female part of the flower.
- 6. At the base of the pistil.

Trivia

- 1. How many flowers must honey bees tap to make one pound of honey?
- 2. How much honey does the average worker honeybee make in her lifetime?
- 3. How fast does a honey bee fly?
- 4. How long have bees been producing honey from flowering plants?
- 5. How many sides does each honeycomb cell have?
- 6. How many wings does a honeybee have?
- 7. What does "super" mean to a beekeeper?
- 8. How do honeybees "communicate" with one another?
- 9. What are the three types of bees in a colony?

Answers



Trivia

- 1. 2 million
- 2. 1/2 teaspoon
- 3. 10-20 million years
- 4. 6
- 5. 4
- 6. hive box in which honey is stored.
- 7. dancing
- 8. queen, worker, drone
- 9. 15-20 MPH
WINGS BEAT 230 TIMES/
PER SECOND